

## What is **FAMILIAL HYPERCHOLESTEROLEMIA (FH)**?

► It is an **INHERITED CONDITION**. People with FH are **BORN WITH DANGEROUSLY HIGH LEVELS OF LDL**, or the “bad” cholesterol.

**EARLY CARDIAC EVENTS**



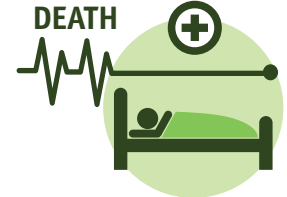
Untreated men with FH have a **50% CHANCE OF HAVING A CARDIAC EVENT** by age 50

Untreated women have a **30% CHANCE BY AGE 60**

**HIGHER RISK OF HEART ATTACK & STROKE**

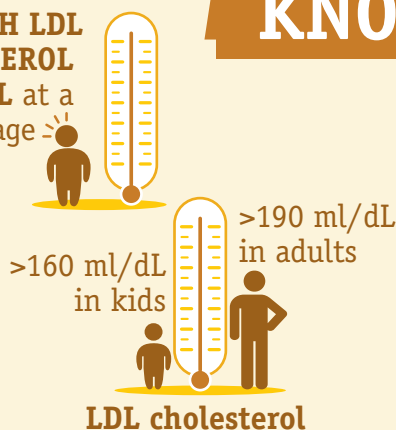


**EARLY DEATH**



## KNOW THE SIGNS

**VERY HIGH LDL CHOLESTEROL LEVEL** at a young age



**NODULES OR RAISED BUMPS** on the skin, tendons, eyelids



**WHITE RING AROUND THE CORNEA** in the eye



Initial treatment with medications to lower cholesterol **FAILS TO REACH GOAL LDL LEVEL**



## How to **TREAT** it

► **COMBINATION THERAPY** is often needed:

• **MEDICATIONS** (statins, bile acid sequestrants, cholesterol absorption inhibitors, PCSK9 inhibitors)



• **Therapy** to remove LDL from the bloodstream



• **DIET, EXERCISE and LIFESTYLE CHANGES**



• **Ongoing monitoring**



► **FH RUNS IN FAMILIES**

If a parent has FH...



...there's a **50% CHANCE** that a child will have it.



Consider earlier screening for children whose parents have FH.



Information provided for educational purposes only. Please consult your health care provider regarding your specific health needs.

For more information, visit [WMCHealthAPS.com/Heart](http://WMCHealthAPS.com/Heart)